

The role of animals in the transition towards a more circular and plant-based food system

Evelien de Olde – Animal Production Systems group (WUR)





I'm off to a good start,
but I bet I can improve on lots of things.





56–58%



40%

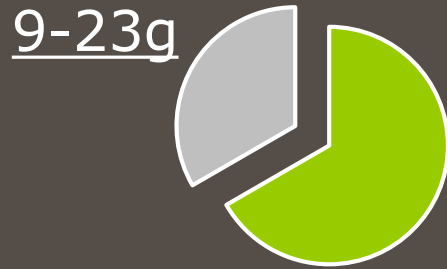


Food waste



How much animal protein can we consume?

Daily protein requirement (60g)



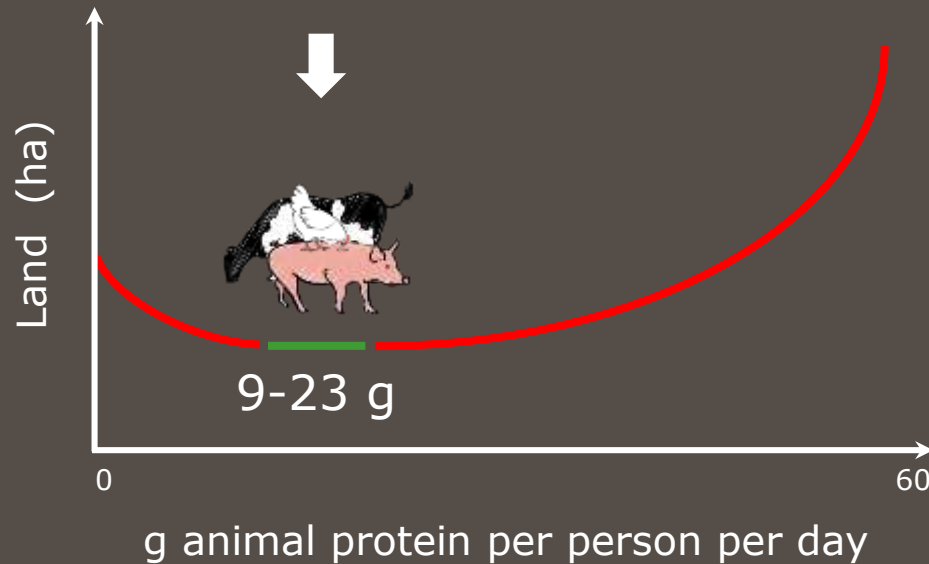
Plant protein

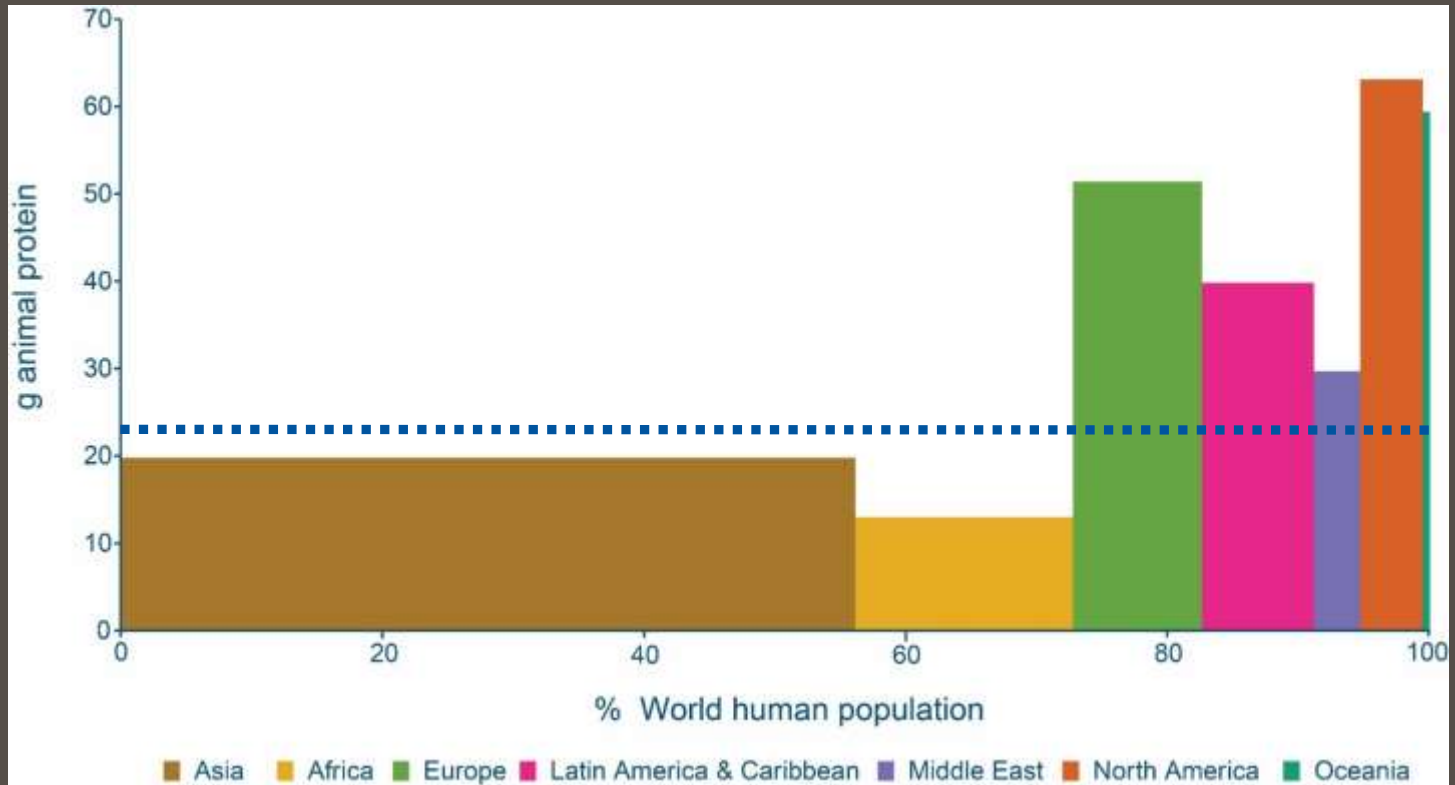


Animal protein



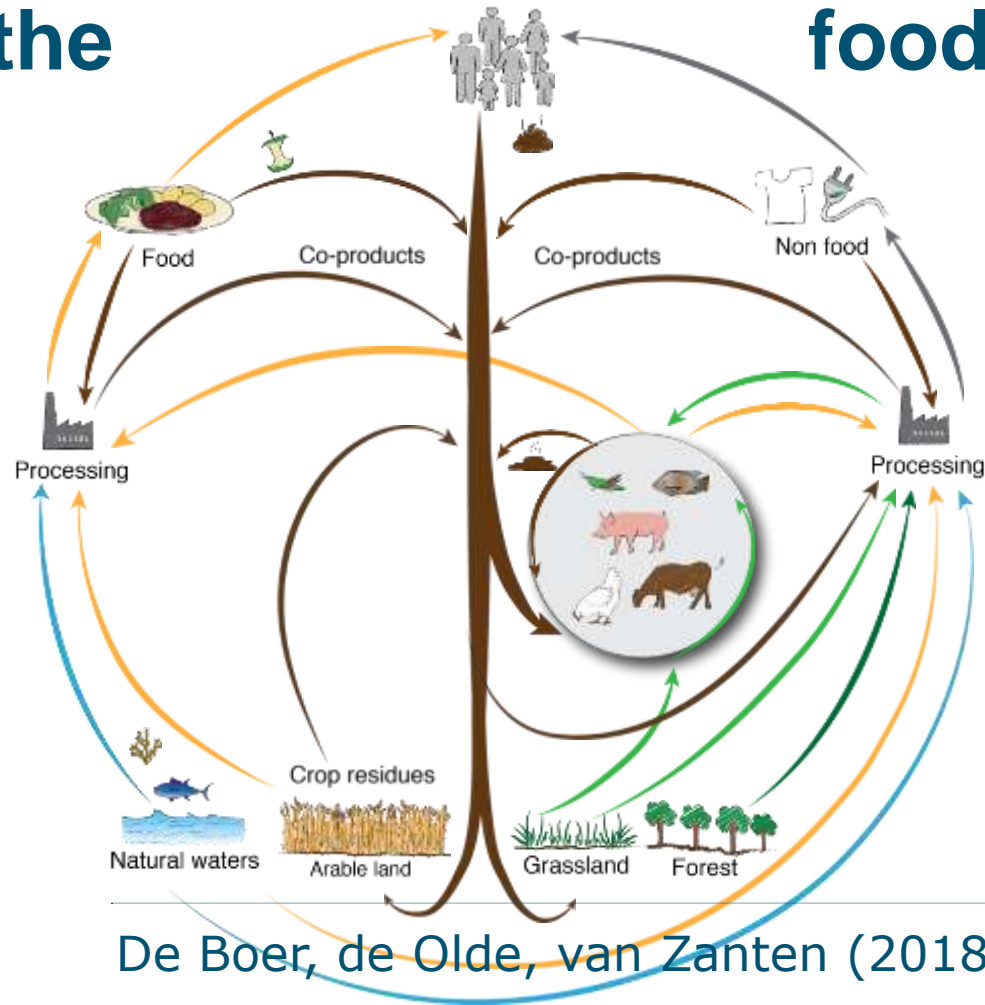
How much animal protein can we consume?



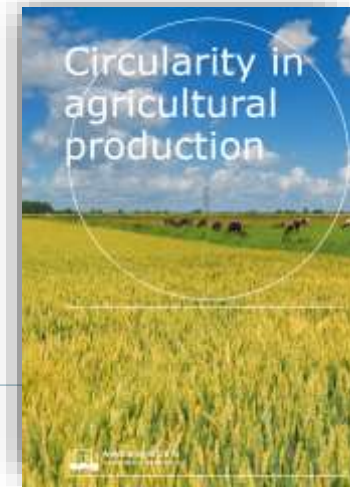


Beyond the

food system



De Boer, de Olde, van Zanten (2018)





WE ARE LIMITED EDITIONS.

Fantastische boxershorts gemaakt van textiel
met nog een heel (tweede) leven voor zich.

IK WIL EEN VANHULLEY >

WIJ ZIJN VERBINDEND

*Wij maken van oud **brood**, overheerlijk nieuw **bier***

[ABOUT](#)

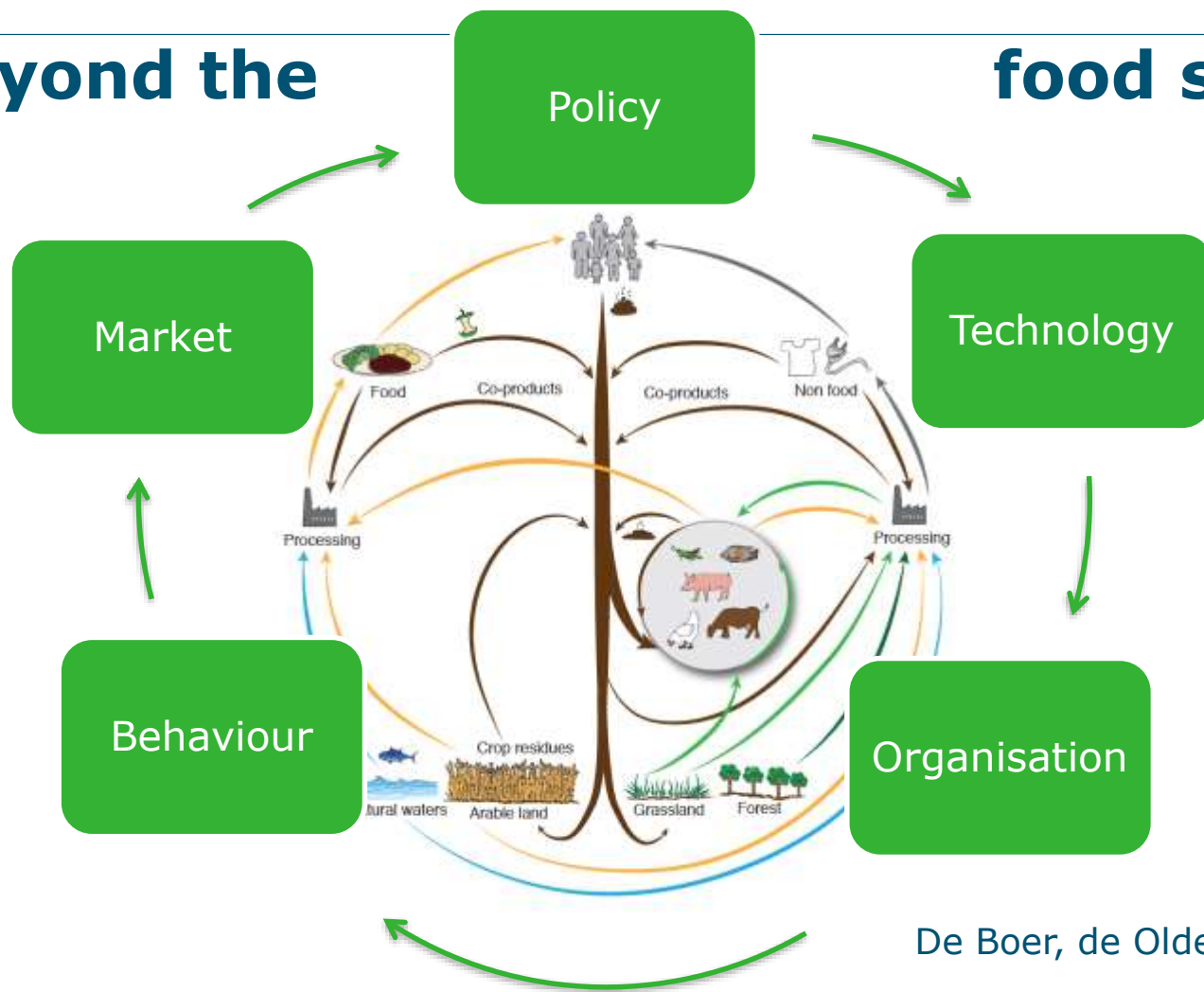
[CONTACT](#)

KIPSTER

[HOME](#)[KIPSTER](#)[INNOVATIONS](#)[AWARDS](#)[NEWS](#)[COLLABORATION](#)[ABOUT US](#)[CONTACT](#)[DUTCH DU](#)[Q](#)

Beyond the

food system



De Boer, de Olde, van Zanten (2018)

Thanks!

Special thanks to Imke de Boer & Hannah van Zanten

Curious how circular you are?

www.resource.wur.nl/en/show/How-circular-are-you.htm

